

SUSUMU SHINGU (1937, Osaka, Japan)



Susumu Shingu in front of his windmill sculpture *Satoyama*, Wind Museum, Arima Fuji Park, Sanda, Japan © Thomas Riedelsheimer, Courtesy Jeanne Bucher Jaeger, Paris-Lisbon

Ventus Sapientiae or Art of the Wind

Susumu Shingu began his vocation as a painter in Japan and went to Rome in the early 1960s, fascinated by the art of the Renaissance, in particular by Piero della Francesca and Leonardo da Vinci, and by the multidisciplinary nature of the artists of the time, who were painters, sculptors, designers, architects, landscape architects, engineers, astronomers and scientists... His three-dimensionality was revealed to him by chance: the effect of the wind on one of his paintings, which he hung from a tree to photograph, set it in motion. This first contact with the invisible energies of Nature - the wind - later completed by that of water, sun, gravity... is fundamental. From then on, the wind's breath animated the artist, both literally and figuratively, and led him to make decisive encounters, notably in Rome, with Mr. Kageki Minami, President of the Osaka shipyards and art lover; while serving as a tourist guide, Susumu Shingu confided to him his desire to work with natural energies and movement without having any notion of engineering. The latter suggested that he returns to Japan for the Osaka World Expo in 1970, providing him with a workshop in his warehouse and his entire team of engineers.

Susumu Shingu thus found, over time, not only his full vocabulary as a sculptor by working with the engineers to deepen the scientific aspect of his work, the intelligence of the detail of the shapes, the exact dimensions of the structural elements, the design of the seals, the anchoring points, the various means of fixing, the fundamental implementation of the ball bearings which allow rotations in perfect freedom, and by developing the practice of perpetual movement in his sculptures, whether they are subject to the infinitesimal interior air or to the most extreme winds outside; He also reconnects with his Japanese soul, marked by respect for absolute nature, acceptance of its unpredictability and contemplation of the beauty of its infinite forms. For over 40 years, Susumu Shingu has been creating sculptures that play with wind, water, light and gravity. His materials develop over time,

from the polymer plastics at the beginning to the medium of corten or stainless steel, or even more high-tech materials such as duralumin, honeycombed aluminium, carbon fiber and Teflon..., and provide his work with the indispensable lightness that offers total osmosis with nature. *This Earth - our planet - is for me a home full of mysterious charm where I find inexhaustible treasures for my creation* says Shingu. Upstream, a number of sketches and preparatory drawings are reminiscent of Leonardo da Vinci's notebooks, with the same attention to detail, to shapes and materials and to their movements, as well as to dreams and visualisation in the invention.



Like a child discovering with wonder the magic, splendour and profusion of Nature's forms, Susumu Shingu never forgets to be deeply grateful for its countless teachings. One needs to see Susumu Shingu beaming with joy as he sees his sculpture coming to life, indoors or outdoors, in a perfectly fluid movement, to understand what moves him: his sculpture is made to capture the invisible translated into the visible, like a breath given as quickly as it is taken back, and whose primary source is beyond us and remains an enigma.

His long life with the wind has been blowing for decades and accompanies his countless projects around the planet: thus the *Wind Caravan*, created in 2000, has taken 21 sculptures to 6 different places on the planet, chosen by the artist for their emblematic winds, their extreme climates, their virgin nature and their preserved populations, sharing their daily life, during the different stages of this one-year journey: the rice fields of Sanda in **Japan** (June 2000), the uninhabited island of Motukorea in **New Zealand** (Nov. 2000), the rocky desert of Tamdaght in **Morocco** (April 2001), the green steppe of Undur Dov in **Mongolia** (June 2001) and the dunes of Cumbuco in **Brazil** (Nov. 2001). The experience of the artist and his wife, actors and witnesses of a unique adventure in the heart of primitive civilizations, allowed them to take the pulse of the planet with the Maoris, the Mongols, the Samis, the Berbers...while circulating the drawings made by children from one destination to another throughout the world, offering each site a form to the wind and thus revealing telluric energies.

(1) Susumu Shingu surrounded by models of his sculptures, outside his studio, Sanda, Japan © All rights reserved, Courtesy Jeanne Bucher Jaeger, Paris-Lisbon

(2) Ripples of Light, 1993, on the pond of his studio, Sanda, Japan © All rights reserved, Courtesy Jeanne Bucher Jaeger, Paris-Lisbon

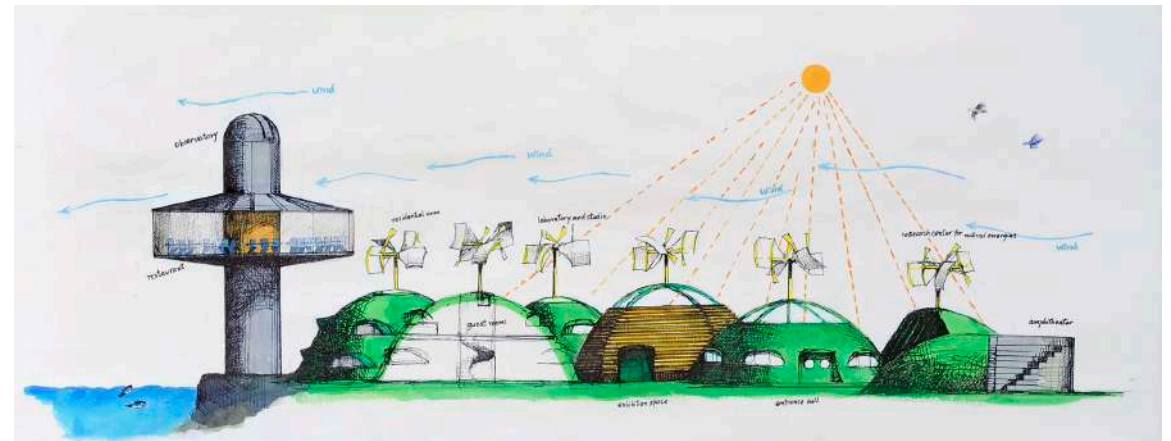


Wind Museum, inaugurated on June 21, 2014, 12 monumental sculptures by the artist, Arima Park, Sanda, Hyogo Prefecture, Japan © All rights reserved, Courtesy Jeanne Bucher Jaeger, Paris-Lisbon

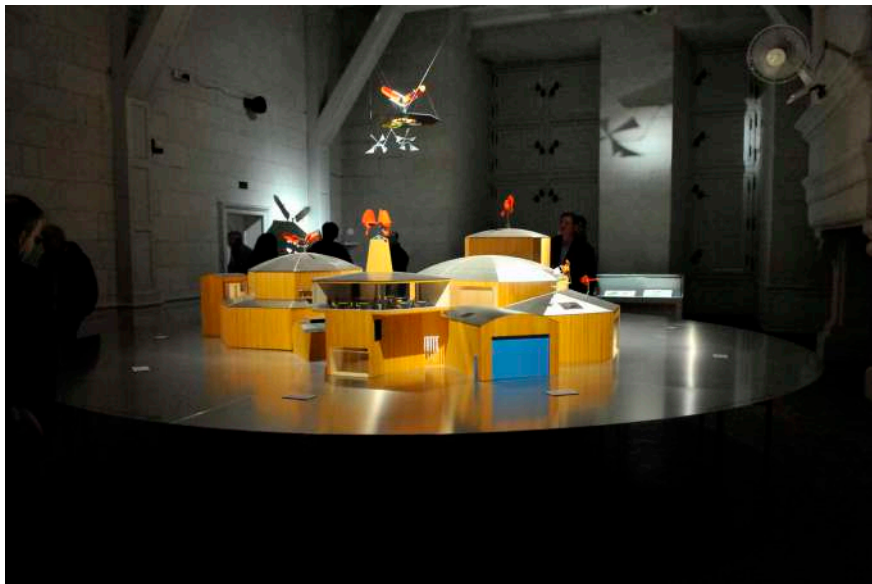
This experience leads him, over the years and with the wind, to deepen the projects that are certainly the culmination of a lifetime of research. A first exhibition at the gallery, *Sculptures du respir* was devoted to the artist in 2006, followed by *Planet of Wind and Water* in 2009 where the artist presented the diorama of his **Breathing Earth** project, a self-sufficient village living with the natural energies of wind, water and sun where each building is animated by his wind sculptures; a place of inspiration, exchange and action for artists, scientists and children instinctively in harmony with his philosophy of Nature.

This project was the subject of a magnificent film **Breathing Earth - Susumu Shingu's dream**, shot over a period of 6 years by the film director Thomas Riedelsheimer. The temporary installation in 2012 of *Sinfonietta of Light* in the large octagonal basin of the Jardin des Tuileries, at the Concorde in Paris, was admired by walkers, in the ceaseless ballet of moving forms of the sculpture's ten pairs of wings, going with the wind as the exhibition *Au-delà du Temps* was held at the gallery. In 2014, the **Susumu Shingu Wind Museum**, with twelve sculptures driven by the natural energies of wind and water, was inaugurated in Arima Park in Sanda, Japan, an oasis of nature between Osaka, Kobe and Kyoto, where the artist lives and works. It featured his windmill sculpture **Satoyama**, a symbol of his environmental research, and one start dreaming that one day it will light up our cities and countryside! In 2018, the *Cosmos* exhibition took place at the gallery as an echo to the *Spaceship* exhibition at Mudam Luxembourg at the same time, presenting works in the main entrance hall and in the outdoor park.

It is easy to understand why, for several decades, great creators such as Issey Miyake in the world of fashion, Jirí Kylián in the world of dance, or Tadao Ando and, more particularly, Renzo Piano in the world of architecture, wanted to develop collaborations with the artist; Those with Renzo Piano are so closely attuned and echo each other that an exhibition entitled *Parallel Lives* has brought together the two creators, born a few months apart in the same year, at the Nakanoshima Art Museum in Osaka from July to September 2023.



- (1) Atelier Earth, 2020 © All rights reserved, Courtesy General Incorporated Foundation ATELIER EARTH
 (2) Exhibition view *Susumu Shingu : une utopie d'aujourd'hui*, 2019-2020, Domaine national de Chambord, France © Georges Poncet, Courtesy Jeanne Bucher Jaeger, Paris-Lisbon
 (3) *Breathing Earth*, 2009, Acrylic and ink on paper, 95 x 114 cm © All rights reserved, Courtesy Jeanne Bucher Jaeger, Paris-Lisbon



Let us not forget the countless theater plays, of which the first in the 1990s, *Kippis and his friends*, created in Sanda, Japan, around a sculpture animated by water, *The Water Tree*, is essential in the artist's work. He designed not only the story but also the sets and costumes. *Kippis and friends* tells the premonitory story of aliens visiting Earth for the first time and naively asking questions about the environment, the meaning of the importance human gives to money and why they seek to dominate nature instead of protecting it. Some 28 years later, we realise how topical these issues are... Similarly, his countless children's books, reflecting deep inspirations from nature, take us on an unforgettable journey, right up to the latest pop-ups and the *Sandalino* character.

Susumu Shingu's ability to translate the wind in all its forms, revealing it for decades in sculptures placed around the world, naturally led the artist, in perfect connivance with Leonardo da Vinci, to present his works at the Domaine national de Chambord, in an exhibition entitled *Susumu Shingu: une utopie d'aujourd'hui*, conceived at the gallery's initiative in 2019, the year of commemorations celebrating both the 500th anniversary of the death of the Italian genius as well as the beginnings of the construction of the most emblematic castle of the French Renaissance. In the image of the Italian master's *Citta ideale*, the artist is previewing the model of his future village under construction, *Atelier Earth*, close to his *Wind Museum* in Japan, a village living from the natural energies of wind, water and sun, revealing and preserving the vital energy of the surrounding nature, *a place where we can reflect on the future of the Earth, in connection with artists, musicians, writers, academics, philosophers, engineers, astronomers and scientists from all over the world*, writes Shingu.

May the wind blow positively on the epiphanic work of this artist in perpetual motion, revealing through his art the primordial natural energies and offering, through the landscapes of his sculptures offered to the wind in the heart of the planet, a perfectly scientific rebirth perspective as well as a place of spirit, spontaneity and child-like curiosity to enter into deep communion with the surrounding environment and its deep nature. Long live **Breathing Earth**, long live attention to the natural flows of the **Earth's Breath**!

Véronique JAEGER



From 2 March to 13 July 2024, the gallery presents a solo exhibition by Susumu Shingu entitled, *The Breath of Here - The Water Beyond [Le Souffle d'ici - L'Eau de là]*, the third and final part of the ENCHAN-TEMPS cycle.

In parallel with the exhibition, OGATA Paris welcomes an exceptional selection by the artist in partnership with the Gallery until June 30, 2024.

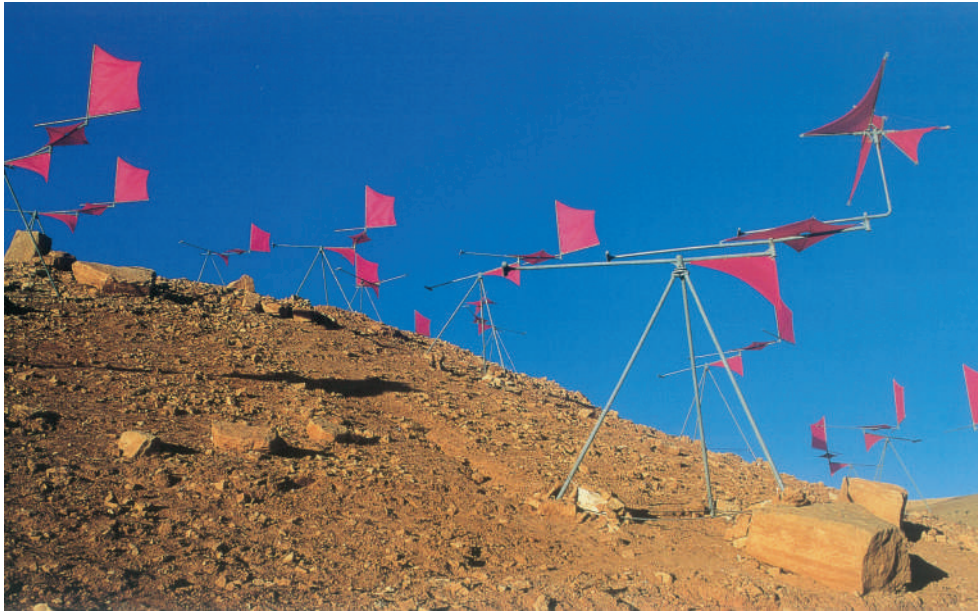


(1) Exhibition view Susumu Shingu, *Spaceship*, 2018-2019, Mudam Luxembourg © Georges Poncet

(2) *Sinfonietta of Light*, 2012, octagonal basin of the Jardin des Tuileries, FIAC Hors les murs, Paris © Hervé Abbadie

Courtesy Jeanne Bucher Jaeger, Paris-Lisbon

(3) (4) Exhibition view, Susumu Shingu, *Le Souffle d'ici - L'Eau de là [The Breath of Here - The Water Beyond]*, 2024, Galerie Jeanne Bucher Jaeger, Paris © Hervé Abbadie



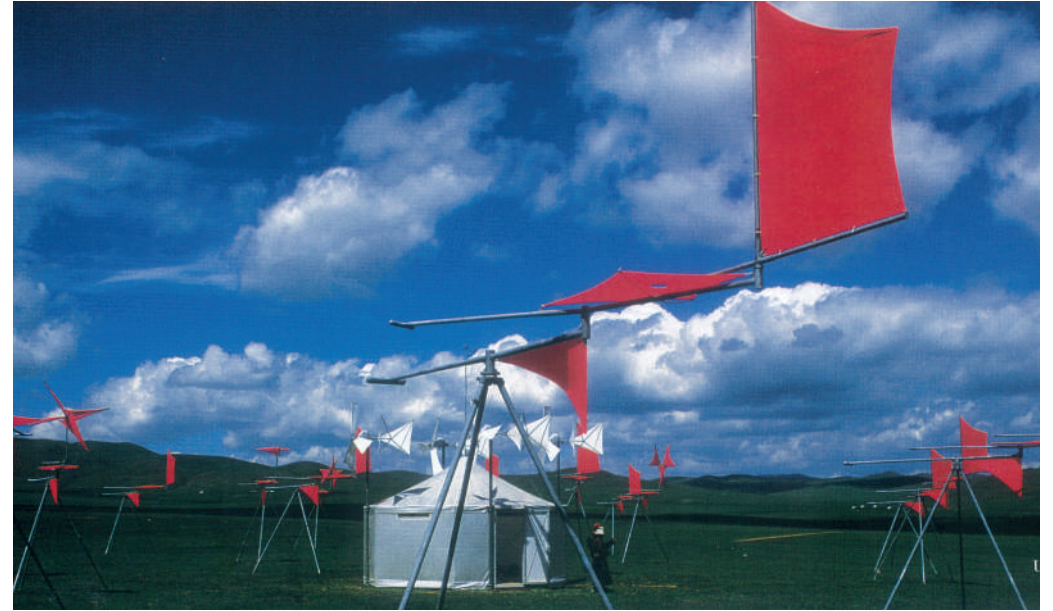
Wind Caravan, 2001, Rocky desert of Tamdaght, Ouarzazate, Morocco



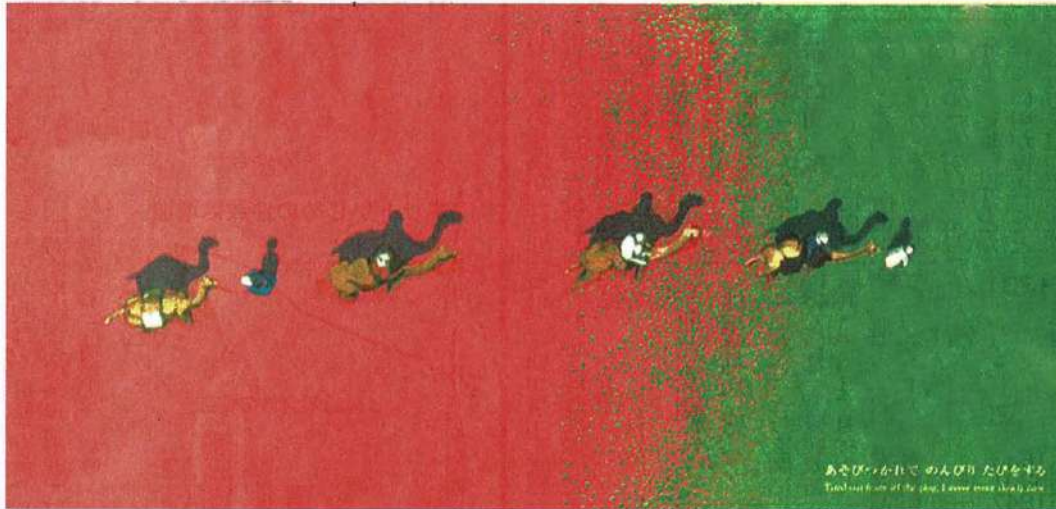
Wind Caravan, 2001, Dunes of Cumbuco, Ceará, Brazil



Wind Caravan, 2001, Motukorea, Auckland, New Zealand



Wind Caravan, 2001, Green Steppe of Undur Dov, Mongolia



絵本が見つめる世界十選 (9)

絵本研究 中川 素子

風の星とは、地球のことである。風や水など自然エネルギーで動く彫刻を作る新宮晋は「いち」「じんべえざめ」など、どの絵本でも、地球上の命を輝かせている。新宮は2000年6月から1年半かけてウインドキャランを行った。新宮の住む三田市からニュージーランドの無人島、フィンランドの北極圏、熱砂のモロッコ、モンゴルの大草原、そしてブラジルの海岸砂丘へ。風が特異で魅力的な地球上の6カ所を回った。この記録は「風の旅人」(扶桑社)に詳しい。すでに店頭では入手できないが、絵本「風の星」でも、風が雲を流し、木々を歌わせ、帆船を走らせ、美しい砂紋を作り出し、インドガンをヒマラヤ越えさせるなど、さまざまなイメージを描いている。新宮の目が、上空から地球を見下ろして描いているのも、風の目になっているからだ。この欄にのせた絵は、風が家の隙間から入り込む熱砂のモロッコから、馬が疾駆する緑色のモンゴルの大草原に向かって、のんびり旅をしている画面である。地図上でモロッコとモンゴルがつながっているわけではないが、風は国境をこえて自由自在に旅をし、世界と人々をつなげるのだ。(作・新宮晋、福音館書店)

10 selections / the world that picture books look at / No. 9 Wind Planet

Motoko Nakagawa / Picture book researcher

Wind Planet is the Earth. Susumu Shingu, who makes sculptures that move by the natural energies of wind and water, turns a spotlight on lives on Earth and lets them shine in each of his picture books, such as Strawberries, Whale Shark, and so on.

Shingu executed the project WIND CARAVAN over a period of a year and a half, beginning in June of 2000. Starting from Sanda, Japan, where he lives, he went to an uninhabited island in New Zealand, the Arctic Circle in Finland, Morocco with its hot sand, the vast steppes of Mongolia, and the coastal dunes of Brazil. He explored six sites on Earth where the wind is characteristic and attractive.

The results are documented in detail in Wind Traveler (Fuso Publishing Bureau). And although it is no longer available in stores, in his picture book, Wind Planet, Shingu drew various images of the wind that transports clouds, makes trees sing, pushes sailboats across the water, creates beautiful sand patterns and lets geese cross the Himalayas.

The eyes of Shingu are always looking down on the Earth from the sky because he possesses the eyes of the wind.

The illustration in this column is about the leisurely journey from Morocco, where wind enters houses through gaps, to green Mongolian steppes, where horses run around. Though Morocco and Mongolia are not connected on the map, the wind travels freely across national borders, connecting the world and its people.

Article published in The Nikkei, October 14, 2021

GENKI-NOBORI

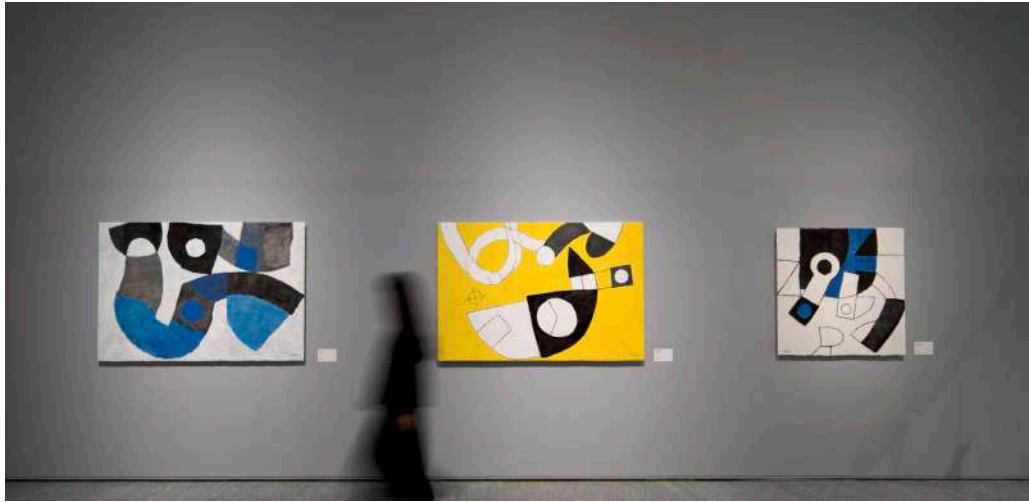
Susumu Shingu created the Genki-nobori Art Project after the devastating earthquake and tsunami in Tokoku in 2011. The children's written messages and drawings are words of encouragement, wishes, and prayers of hope sent to the wind to help the victims of these disasters. For Shingu, whose urgent mission is now to work with the children of our planet, these Genki-nobori are the ultimate forms of wind sculptures.

1) Genki-nobori IV Workshop and Exhibition, May 11, 2024, Arima Fuji Park, Sanda, Hyogo
2) and 3) Genki-nobori Workshop, September 2, 2023, Arima Fuji Park, Sanda, Hyogo ©Susumu Shingu ©
All rights reserved



FUBON ART MUSEUM, TAIPEI

Solo exhibition from October 12, 2024, to February 17, 2025



© Fubon Art Museum, Tapei © rights reserved



©Yumi Shingu © rights reserved



The Galaxy, 2024 © Susumu Singu © rights reserved

PHILOSOPHIE



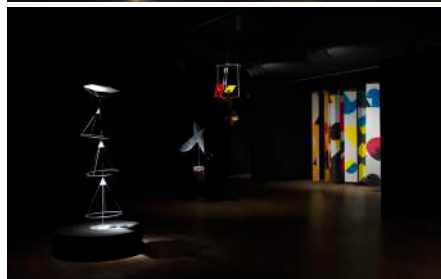
“

In his own way, Shingu brings to bear a search for perpetual motion through the laws of weights and counterweights animated by the wind. On countless pages of notebooks containing an admixture of sketches and notes, the artist illustrates his obsession with perpetual motion, intimately associated with the flows (air, water) on which he works. His obsession is undeniably akin to the preoccupations haunting countless leaves of Da Vinci's codices: the same fascination with natural flows, analogous inventions of rigorous mechanisms for projected machines, comparable research on screws, ellipses and other gyratory figures liable to launch or welcome an initial movement dynamizing the grand machine of the world, the universal motor that never lets up. Of course Shingu avails himself of Newton's discoveries, he is on familiar terms with Foucault's pendulum, and he may even draw benefit from the breakthroughs of atomic physics... In his dream, however, he is not asking for so much - or rather, he is asking for far more; just like Leonardo, he maintains childhood openness to the world, a form of curiosity indispensable to minuscule epiphanies and invaluable inventiveness. It is like the flight of a bird, or that of a sculpture rivetted on the ground, yet making light of gravity. Indeed, that is what wind-driven machines do; they exist at the exact meeting point of weight and evaporation, fall and balance, predation and evasion.

Yannick Mercoyrol, Director of Heritage and Cultural Programming, Domaine national de Chambord

SOLO EXHIBITIONS (selection)

- 2025 COSMOS – Susumu Shingu – *Wind Traveler*, Fubon Art Museum, Taipei
- 2024 «Le Souffle d'ici – L'Eau de là» [*The Breath of Here – The Water Beyond*]
Galerie Jeanne Bucher Jaeger, Paris, France
- 2022 *Sculpting with Wind*, Ippodo Gallery, New York, USA
Sculpting with Wind, Ippodo Gallery, Ginza, Tokyo, Japan
- 2021 Open-air performance *Noh of the Wind IV*, Susumu Shingu Wind Museum,
Arimafuji Park, Sanda Hyogo, Japon
Workshop *Genki-nobori*, Susumu Shingu Wind Museum, Arimafuji Park,
Sanda Hyogo, Japan
- 2019-20 *Susumu Shingu, une utopie d'aujourd'hui*, Château de Chambord, France
- 2019 Open-air performance *Noh of the Wind III*, Susumu Shingu Wind Museum,
Arimafuji Park, Sanda Hyogo, Japon
- 2018-19 *Wind Caravan and Spaceship*, MUDAM, Park Dräi Eechelen, Luxembourg
- 2018 COSMOS, Galerie Jeanne Bucher Jaeger, Marais Space, Paris, France
Open-Air performance *Jazz of the Wind*, Susumu Shingu Wind Museum,
Arimafuji Park, Sanda Hyogo, Japon
- 2017 *Spaceship*, Hyogo Prefectural Museum of Art, Kobe, Japan, France
Open-Air performance *Noh of the Wind* Susumu Shingu Wind Museum,
Arimafuji Park, Sanda Hyogo, Japon
- 2016 *Spaceship*, Nagasaki prefectural Art Museum, Japan
Spaceship, Yokosuka Museum of Art, Japon
- 2014 Opening of the *Susumu Shingu Wind Museum*, Arimafuji Park, Hyogo,
Japon
Susumu Shingu – Playing on the Earth, Kobe City Koiso Memorial Museum
of Art, Kobe, Japon
- 2013 *Little Cosmos* (and presentation of the film *Breathing Earth – Susumu
Shingu's Dream*), Tanimatsuya Toda Gallery & Yamaki Art Gallery, Osaka,
Japan
- 2012 *Susumu Shingu – Beyond Time*, Galerie Jeanne Bucher Jaeger & Premiere
of the film *Breathing Earth – Susumu Shingu's Dream* at Panthéon Cinema,
organized by Jeanne Bucher Jaeger Gallery
Sinfonietta of Light – installation of 10 sculptures in the octagonal basin of
the Jardin des Tuileries as part of “Hors les murs”, FIAC 2012, presented
by Galerie Jeanne Bucher Jaeger, Paris, France
- 2011 *Susumu Shingu – Little Planet*, T's Gallery et Yamaki Art Gallery, Osaka,
Japan
Atelier in the Rice Paddies – Wind Sculptures by Susumu Shingu, Sanda, Japon
- 2009 *Susumu Shingu – Planet of Wind and Water*, Galerie Jeanne Bucher Jaeger,
Paris, France



- (1) COSMOS, 2018, Jeanne Bucher Jaeger, Paris, Marais
© Georges Poncet
(2) *Spaceship*, 2018-2019, Mudam Luxembourg ©
Georges Poncet
(3) *Spaceship*, 2016, Nagasaki Museum of Art, Japon ©
All rights reserved
(4) *Planet of Wind and Water*, 2009 © Hervé Abbadie
Courtesy Jeanne Bucher Jaeger, Paris-Lisbon

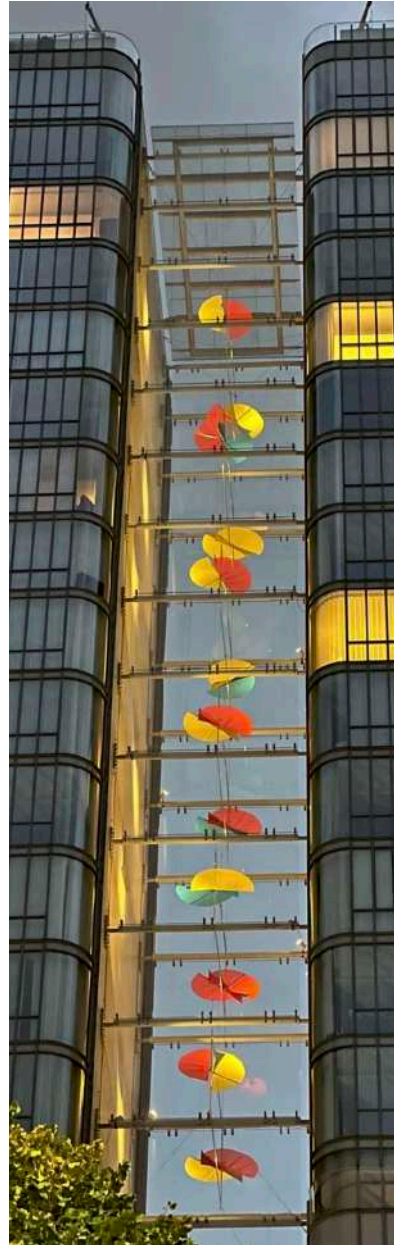
- 2006 *Sculptures du Respir*, Galerie Jeanne Bucher Jaeger, Paris, France
- 2005 Stage setting of the ballet of Jiri Kylián's, *Toss of a Dice*, with Nederlands
Dans Theater I in the Hague, Netherlands
- 2001 *Wind Caravan*, traveling outdoor exhibition in Inari, Finland ; Tamdaght,
Morocco ; Undur Dov, Mongolia ; and Cumbuco, Ceará, Brazil
Encounter with Nature, Maison Hermès, Tokyo, Japon
Solo exhibition, Glasgow School of Art and Podium Gallery at Glasgow
School of Architecture, Scotland
- 2000 *Wind Caravan*, outdoor exhibition in the rice paddies in Sanda, Hyogo,
Japan and on Motukorea Island in Auckland, New Zealand
- 1997 *Models of Wind Sculptures*, Matsuya Ginza, Tokyo, Japon
Performance Cat's Cradle of the Stars, Saitama Arts Theater, Japon
- 1993 *Solo exhibition*, Suita Cultural Centre, Osaka, Japon
- 1991 *Aria Acqua Luce*, Loggia della Mercanzia, Genoa, Italy
- 1990 *Windcircus*, Chuo Park, Sanda, Hyogo Prefecture, Japon
- 1989 *Solo exhibition*, Paris Art Center, Paris
- 1988 *Windcircus*, traveling outdoor exhibition, World Trade Center in New
York ; Heritage State Park in Fall River, Massachusetts ; Grant Park in
Chicago ; Esplanade in Boston ; and Wilshire Federal Building in Los
Angeles, USA
- 1987 *Windcircus*, traveling exhibition, Market Place and the Weser riverbank,
Bremen, Germany; Parc de l'Espanya Industrial, Barcelona, Spain ; Villa
Demidoff-Parco di Pratolino, Florence, Italy; Mikkula Camping Site,
Lahti, Finland
- 1986 *Solo exhibition*, Kanagawa Prefecture Gallery and at the Sairin Gallery,
Yokohama, Japon
- 1985 *Solo exhibition*, Suita, Osaka Cultural Centre, Japon
- 1984 *Message from Nature*, Galerie Sakura, Nagoya et Galerie Ina, Tokyo,
Japon
Breathing Sculptures, Hyogo Prefectural Museum of Modern Art, Japon
- 1979 *Solo exhibition*, Galerie Asahi, Kyoto, Japon
- 1976 *Sketchbook of Wind and Water*, Mikimoto Hall, Tokyo, Japon
- 1975 *Wind sculptures*, Galerie Kasahara, Osaka, Japon
- 1973 *Wind and Water Sculptures*, outdoor exhibition, PepsiCo, Purchase, New
York, USA
- 1972 *Wind and Water*, Galerie Kono, Tokyo et American Center, Osaka, Japon
- 1967 *Wind Structures*, Shoho Gallery, Osaka et Hibiya Park, Tokyo, Japon
- 1966 First showing of three-dimensional works, Galerie Blu, Milan, Italy

Susumu Shingu's works in Japan and around the world



PUBLIC COLLECTIONS (selection)

- 2024 *The Galaxy*, Fubon Art Museum, Taipei, Taiwan
- Future Forest*, Fubon A25 Xinyi Tower, Taipei, Taiwan
- 2021 *Rainbow Leaves*, 565 Broome St, Soho, New York, USA
- Infinite Journey*, Entrance hall of Foyer, Luxembourg
- 2018 *Wings of Poetry*, University of Kochi, Kochi, Japan
- 2017 *Astral Dialogue*, Sanda City Hall, Hyogo, Japan
- Cosmos, Epic and Myth*, Stavros Niarchos Foundation Cultural Center, Athens, Greece
- 2016 *Water Planet*, Mitsukan Museum, Handa, Aichi, Japan
- 2015 *Wind Tree*, Point de vue de Udatsuyama Park, Kanazawa, Ishikawa, Japan
- Wind Planet*, JUT Headquarter, Taipei, Taiwan
- 2012 *Forest of the Wind*, JR Yoshikawa-minami Station Plaza, Saitama, Japan
- Distant Sky*, Mercedes House, New York, USA
- 2011 *Forest of Light*, The Central Library, Fukuoka University, Japan
- Horizon*, Tanimatsuya Toda gallery, Osaka, Japan
- 2008 *Echo of Light*, Hekinan City Tatsukichi Fujii Museum, Aichi, Japan
- 2007 *Silent conversation*, Université National de Tsin Hwa, Taiwan
- Water Beat*, Banca di Lodi, Italy
- 2006 *Tree of the Sun*, Château d'Arsac, Margaux, France
- Birth of water*, Sanpellegrino S.p.A., Milan, Italy
- Light-Bearing Tree*, I Guzzini S.p.A., Recanati, Italy
- 2005 *Greetings of the Sun*, Pinnacle Land, Asan, South Korea
- Symphony of the sea*, Happy village, Marina di Camerota, Italy
- Wind Navigator*, Happy village, Marina di Camerota, Italy
- Wings of the Earth*, Château d'Arsac, Margaux, France
- 2004 *Birth of Rainbow*, Nankang Software Park, Taipei, Taiwan
- Wind Petals*, Oshima Bridge Park, Taipei, Taiwan
- Cloud of light*, Il Sole 24 Ore, Milan, Italy
- The legend of the sun*, Mie Total Recycle Center, Ueno, Mie, Japan
- 2003 *Silhouette of Time*, Tokiwa Park, Ube, Yamaguchi, Japan
- 2001 *Tribute to the Cosmos*, Maison Hermès, Ginza, Tokyo, Japan
- 2000 *Memory of Landscape*, Nanakita Park, Sendai, Miyagi, Japan
- Wind Travelers*, Eastport Park, Boston, Massachusetts, USA
- 1999 *Water Flower*, Banca Popolare Italiana, Lodi, Italy
- Resonance of Life*, Musée en plein air, Hakone, Japan
- Luminous Wind*, Université de design, Kobe, Japan
- 1998 *Duet of Water*, Montecatini, Terme, Italy
- Astral Traveler*, Seiwa Corporation, Osaka, Japan
- Dialogue with Clouds*, Centro Meridiana, Lecco, Italy



Rainbow Leaves, 2021, 565 Broome St—designed by Renzo Piano—Soho, New York City © All rights reserved

- 1997 *Portrait of the Sun*, Nishiumeda Park, Osaka, Japan
- Earth Poem*, JR Shinsanda Station Plaza, Hyogo, Japan
- Reflection of Rainbow*, Siège de la banque Itaú, Sao Paulo, Brazil
- Cosmic Flower*, Hôpital municipal Toyonaka, Osaka, Japan
- Ocean of Light*, Kwansei Gakuin University, Nishinomiya, Hyogo, Japan
- 1995 *Dialog with the Sun*, Cour de Justice criminelle du Queens, New York, USA
- Locus of Rain*, Lingotto, Turin, Italy
- 1994 *Boundless Sky*, Aéroport International Kansai, Osaka, Japan
- Memory of the Waves*, Mermaid Plaza, Tempozan, Osaka, Japan
- 1993 *Wind Message*, Costa Romantica, Italian cruise ship
- Star-Bearing Tree*, Yurigatake Park, Saikai, Nagasaki, Japan
- Ripples of Light*, Artist's collection
- 1992 *Wind Kaleidoscope*, Brain Center Inc., Osaka, Japan
- Columbus' Wind*, Harbor of Genoa, Italy
- Water Tree*, Aono Dam Park, Sanda, Hyogo, Japan
- Astral Statue*, Aono Dam Park, Sanda, Hyogo, Japan
- Rowing across the Milky Way*, Murasaki River, Kitakyushu, Japan
- 1991 *Wings of Waves*, Ikuchi Island, Setoda-cho, Hiroshima, Japan
- White Constellation*, Nunobiki Park, Kobe, Japan
- 1990 *Meadow of Clouds*, Sapporo Sculpture Garden, Japan
- 1989 *Wind Musical Notes*, Yokohama Museum of Art, Japan
- 1988 *Rainbow Tree*, Fukada Park, Sanda, Hyogo, Japan
- Sky Beat*, Yomiuri Television, Osaka, Japan
- Wings' Breath*, Olympic Park, Seoul, South Korea
- 1985 *Gift of the wind*, Porter Square MBTA Station Cambridge Massachusetts, USA
- Sky Image*, Cultural Center of Suita, Osaka, Japan
- 1983 *Echo of the Waves*, New England Aquarium, Boston, Massachusetts, USA
- 1982 *Windspace*, Laboratoire de recherches, Mobil E & P, Farmers Branch, Texas, USA
- 1981 *Time Traveler*, Musée d'art Miyagi, Sendai, Japan
- Portrait astral*, Flower Road, Kobe, Japon
- 1979 *Distant Rhythm*, Musée d'art de la préfecture de Hyogo, Kobe, Osaka, Japan
- 1978 *Never-ending Dialog*, Musée en plein air Hakone, Kanagawa, Japan
- 1977 *Zasso Forest School*, Kyotanable-shi, Kyoto, Japan
- 1975 *Message from across the Ocean*, JR Kobe Station Plaza, Kobe, Japan
- 1970 *Path of the Wind*, Senri-Kita Park, Osaka, Japan

GROUP EXHIBITIONS (selection)

- 2025 *Avènement*, centenary of the gallery, Galerie Jeanne Bucher Jaeger, Paris, Marais
- 2023 *Parallel Lives – Susumu Shingu + Renzo Piano*, Nakanoshima Museum of Art, Osaka, Japan
- 2018 *Dessins de sculpteurs*, Galerie Jeanne Bucher Jaeger, Espace Marais, Paris, France
- 2017 *Kairos Castle, The art of the moment*, Gaasbeek, Belgique, en collaboration avec la Galerie Jeanne Bucher Jaeger
- Corps et Ames*, Galerie Jeanne Bucher Jaeger, Espace Marais, Paris, France
- Passion de l'Art – Galerie Jeanne Bucher Jaeger depuis 1925*, Musée Granet, Aix-en-Provence, France
- Whispers from the Earth*, Galerie Jeanne Bucher Jaeger, Espace St Germain, Paris, France
- A Decade : Our Urban Imagination and Adventures*, Jut Art Useum, Taipei, Taïwan
- 2016 *Dialogue IX*, Galerie Jeanne Bucher Jaeger, Espace Marais, Paris, France

PICTURE BOOKS

- 2019 *Sandalino*, Susumu Shingu, Ed. Gallimard Jeunesse, Paris
- Sandalino – Where are you from?*, Susumu Shingu, BL Publishing Co., Ltd.
- 2018 *Avec le soleil*, Susumu Shingu, Ed. Gallimard Jeunesse, Paris
- La Fraise*, Susumu Shingu, Ed. Gallimard Jeunesse, Paris
- 2017 *Le voyage du vent*, Susumu Shingu, Ed. Gallimard Jeunesse, Paris
- With the Sun*, Susumu Shingu, Crayon House Publishing Inc.
- 2015 *Un petit bois mystérieux*, Susumu Shingu, Ed. Gallimard Jeunesse / Giboulées
- Il Boschetto misterioso*, Susumu Shingu, L'ippocampo Edizioni
- A Little Mysterious Forest*, Susumu Shingu, BL Publishing Co., Ltd.
- Airy Stroll* (« Little Children's Science Companion », No 158), Susumu Shingu, Fukuinkan Shoten Publishers, Inc.
- 2013 *INSIDE MY THINKING*, Susumu Shingu, Brain Center Inc. Osaka, Japan
- 2012 *Le Papillon Voyageur*, Susumu Shingu, Ed. Gallimard Jeunesse, Paris
- Traveling Butterfly*, Susumu Shingu, Bunka Publishing Bureau
- 2007 *Little Birds*, Susumu Shingu, Bunka Publishing Bureau
- 2006 *Les Petits Oiseaux*, Susumu Shingu, Ed. Gallimard Jeunesse, Paris
- L'Araignée*, Susumu Shingu, Ed. Gallimard Jeunesse, Paris
- 2004 *Wind Planet*, Susumu Shingu, Fukuinkan Shoten Publishers, Inc.
- When You Turn on the Faucet* (« Little Children's Science Companion », No 25), Susumu Shingu, Fukuinkan Shoten Publishers, Inc.
- 2003 *WIND CARAVAN*, Susumu Shingu, Brain Center Inc. Osaka, Japan
- 1999 *Little Pond*, Susumu Shingu, Fukuinkan Shoten Publishers, Inc.
- 1994 *Kippis's Earth Journey* (« A World of Wonders », No. 111), Susumu Shingu, Fukuinkan Shoten Publishers, Inc.
- 1991 *Whale Shark*, Susumu Shingu, Fuso Publishing Inc.
- 1979 *Spider*, Susumu Shingu, Bunka Publishing Bureau
- 1975 *Strawberries*, Susumu Shingu, Bunka Publishing Bureau



Avènement, 2025, centenary of the gallery, Galerie Jeanne Bucher Jaeger, Paris, Marais © Hervé Abbadie, Courtesy Jeanne Bucher Jaeger, Paris-Lisbonne



Signing of illustration books by Susumu Shingu, Paris Gallery Weekend 2018, COSMOS Exhibition, Galerie Jeanne Bucher Jaeger, Paris, Marais © All rights reserved, Courtesy Jeanne Bucher Jaeger, Paris-Lisbon

MONOGRAPHS

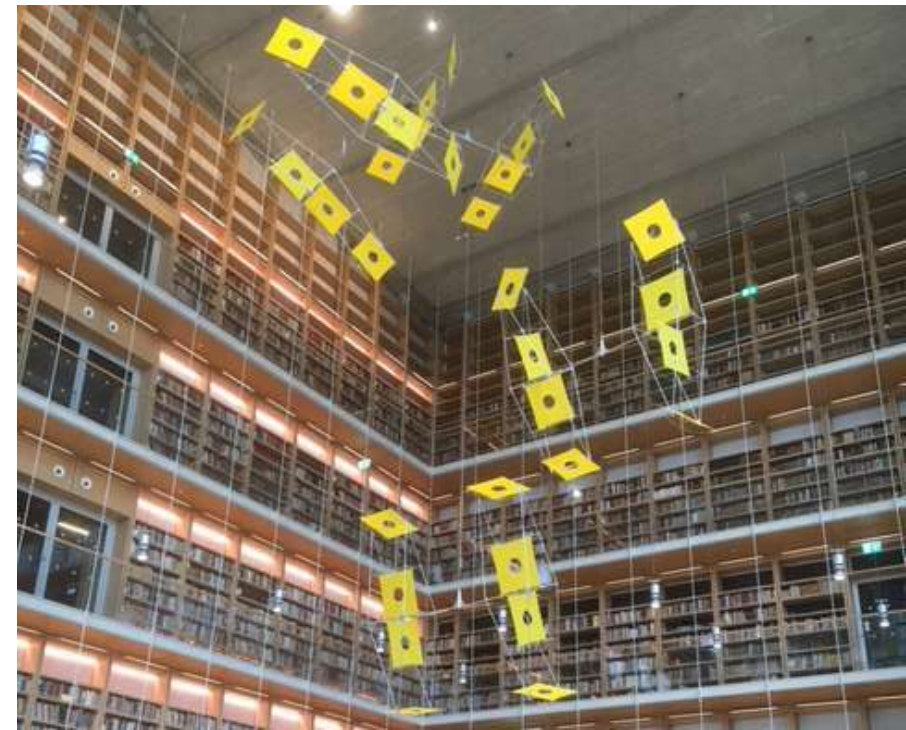
- 2023 *Inside My Thinking II & III*
2013 *Inside My Thinking*, Brain Center Inc.
2008 *Shingu (Découvrons L'Art)*, Bernard Vasseur; Paris: Edition Cercle d'Art
2005 *Shingu*, Peter Buchanan, Renzo Piano, Jirí Kylián et Yusuke Nakahara, Paris: Edition Cercle d'Art
2003 *Wind Caravan*, Brain Center Inc., 2003
1997 *Shingu: Message from Nature*, Renzo Piano, Pierre Restany and Susumu Shingu, New York: Abbeville Press Publishers
1991 *Shingu: Rhythm of Nature*. Rudolf Arnheim, Nakahara, Yusuke, Osaka, Japan: Brain Center Inc.
1983 *Dialogue with Nature: Susumu Shingu*, Louis J. Bakanowsky, Tokyo: Process Architecture Publishing Co., Ltd.
Wind and Water, Susumu Shingu, Osaka, Japon
1973 *Shingu*, Edward F. Fry and Takahiko Okada, New York: Harry N. Abrams

EXHIBITION CATALOGS

- 2019-20 *Susumu Shingu, Une Utopie d'aujourd'hui*, Ed. Galerie Jeanne Bucher Jaeger Paris, en association avec le Château de Chambord, France
2018 *Spaceship et Cosmos*, Ed. Galerie Jeanne Bucher Jaeger Paris, en association avec le Mudam Luxembourg
2017 *Passion de l'Art*, Galerie Jeanne Bucher Jaeger depuis 1925, Véronique Jaeger, Emmanuel Jaeger, Bruno Ely, Ed. Skira Paris
2016 *SPACESHIP*, Ed. Spatial Design & Art
2014 *Susumu Shingu - Playing on Earth*, Ed. Kobe City Koiso Memorial Museum of Art
2013 *Little Cosmos*, Ed. Tanimatsuya Toda Gallery and Yamaki Art Gallery
2012 *Au-delà du temps*, Ed. Galerie Jeanne Bucher Jaeger, Paris, France
2011 *Wind Brings Light*, Ed. JUT Foundation for Arts and Architecture
2009 *Planet of Wind and Water*, Ed. Galerie Jeanne Bucher Jaeger
2008 *Expansion-Résonance*, Ed. Galerie Jeanne Bucher Jaeger
2006 *Sculptures du Respir*, Ed. Galerie Jeanne Bucher Jaeger
2002 *Wind Traveler (Kase-no-Tabibito)*, Fuso Publishing Inc.
1989 *Windcircus*, Shinchosca Inc.
1984 *Breathing Sculptures*, Ed. Hyogo Prefectural Museum of Modern Art



Cosmos, National Opera of Athens, Stavros Niarchos Foundation, Greece, 2018 © All rights reserved



(1) *Water Tree*, 1992, Aono Dam Park, Sanda, Japan © All rights reserved, Courtesy Jeanne Bucher Jaeger, Paris-Lisbon
 (2) *Myth*, 2018, Library of the Stavros Niarchos Foundation, Athens, Greece © All rights reserved
 (3) *Toss of a Dice*, 2005, choreography by Jirí Kylián, Garnier Opera, Paris, 2006 © Franco Mammana



(1) View of the work *Legend of Light*, 2012 in the exhibition *Susumu Shingu - Au-delà du temps*, 2012, Galerie Jeanne Bucher Jaeger, Paris, Marais © All rights reserved., Courtesy Jeanne Bucher Jaeger, Paris-Lisbon
 (2) *Memory of the Waves*, 1994, Tenpozan, Osaka, Japan © All rights reserved



Exhibition *Susumu Shingu, une utopie d'aujourd'hui*, 2019-2020 , Domaine national de Chambord, France © Georges Poncet, Courtesy Jeanne Bucher Jaeger, Paris-Lisbon