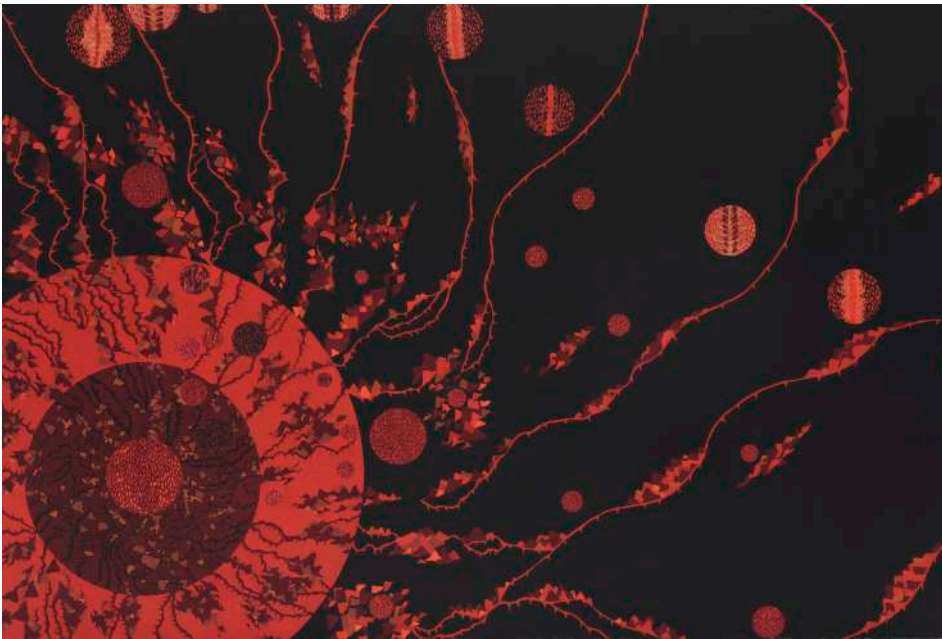


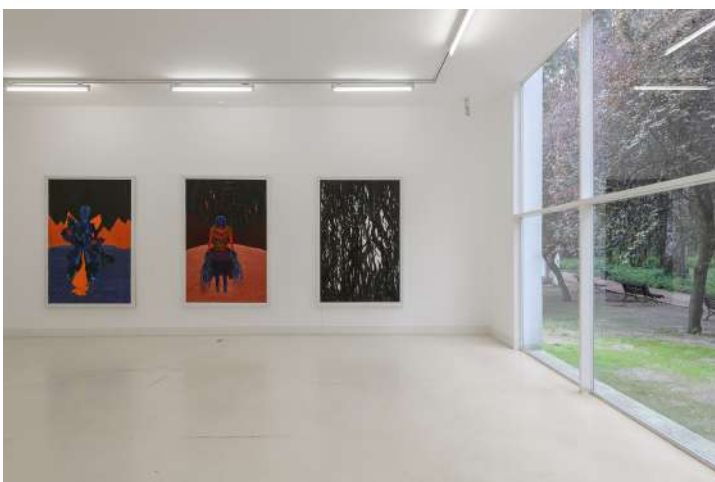
RUI MOREIRA

1971



Stella Maris I, 2022
Gouache on paper, 102 x 153 cm
© Laura Castro Caldas
Courtesy Jeanne Bucher Jaeger, Paris-Lisbon

Heir to a Portuguese past nourished by distant expeditions, the work of Rui Moreira, born in Porto in 1971, is often based on his travels, his sensory explorations of the world, experiencing and restoring, through his creations, the physical and psychological perceptions inherent in places, atmospheres - the scorching heat of the Moroccan desert, the icy mountain temperatures at the source of the Ganges, the Kathakali dance, the humidity of the Amazon jungle, the rituals of the Caretos of Podence in northern Portugal... This intense feeling is at the heart of the very structure of his drawings, made with meticulousness and extreme patience, like a mnemonic exercise based on a ritual action with line, repeated tirelessly, outside chronology nor linear spatiality. The monumentality of the whole is built in its minute detail and delicacy. Rui Moreira's works often take the form of geometric abstractions forming a cosmography, or organic landscapes reminiscent of living structures, or divinities emerging from mythological landscapes. Like these benevolent divinities, Rui Moreira's drawings are inhabited by a new form of life and beauty that heralds a certain state of being on Earth.



Solo exhibition *Os Pirómanos*, Rui Moreira 2016, Pavilhão Branco, Lisbon, Portugal
© All rights reserved, Courtesy Jeanne Bucher Jaeger, Paris-Lisbon



Solo exhibition *I'm a Lost Giant in a Burnt Forest*, Rui Moreira 2014, MUDAM, Luxembourg © Remi Villaggi/ Mudam Luxembourg



Solo exhibition *The Passengers*, Rui Moreira, 2022, Jeanne Bucher Jaeger, Paris, Marais © Hervé Abbadie, Courtesy Jeanne Bucher Jaeger, Paris-Lisbon

His drawings are also nourished by cinematographic references to Tarkovsky, Hitchcock, Herzog, Syberberg or Kubrick; or musical references, from Bach and Stockhausen to traditional Indian, Japanese, Portuguese or Arabic music; as well as visual references such as a fresco by Piero della Francesca. His latest series of drawings *STELLA MARIS* consists of different layers, from the cosmos to a deep underwater world. These drawings do not exist between two places but create a new space, a liquid cosmic space-time where top and bottom merge, where duality fades away to leave only the One, where rhythm and movement become slow, vast, like a universal pulse. A full moon induces and evokes human fertility, a slow-motion eclipse creates momentary chaos between humans and animals, explosions at the heart of the solar star generate revolutions on the planet Earth... Love is the blood of the universe.

Since 2008, the gallery has dedicated several solo exhibitions to him - *Inner Monsoon* in 2010, *La Nuit* in 2014, *The Passengers* in 2022 - and has accompanied a number of his exhibitions in international institutions; in 2014, **Mudam Luxembourg** devoted a major exhibition to him, and in 2015, Rui Moreira's work entered the Société Générale Contemporary Art Collection. In 2016, a group of ten works was presented at the **Pavilhão Branco in Lisbon**. Entitled *Os Pirómanos*, this exhibition was then presented at **Centro Internacional das Artes José de Guimarães** in 2017. In 2018, Yuko Hasegawa presented his work in the exhibition *Saudade Unmemorable Place in Time - China-Portugal* at the Fosun Foundation in Shanghai and then at the **Museu Colêção Berardo** - Centro Cultural de Belém in Lisbon. The artist is exhibited at the Museum of Contemporary Art in Lisbon, in the exhibition *I II III IV V - five decades of ar.co* in 2023.

Rui Moreira is preparing a major solo exhibition at **MAAT - Museum of Art, Architecture and Technology** in Lisbon for April-May 2024. This exhibition will travel to other European institutions.



Solo exhibition *La Nuit*, Rui Moreira, 2014, Jeanne Bucher Jaeger, Paris, Marais © Hervé Abbadie, Courtesy Jeanne Bucher Jaeger, Paris-Lisbon



Solo exhibition *Inner Monsoon*, Rui Moreira, 2010, Jeanne Bucher Jaeger, Paris, Marais © Hervé Abbadie, Courtesy Jeanne Bucher Jaeger, Paris-Lisbon



Solo show, Rui Moreira, *Inner Monsoon* 2010, Jeanne Bucher Jaeger - Marais space, Paris © Hervé Abbadié



Solo show, Rui Moreira, *Inner Monsoon* 2010, Jeanne Bucher Jaeger - Marais space, Paris © Hervé Abbadié



Solo show, Rui Moreira, *La Nuit* 2014, Jeanne Bucher Jaeger - Marais space, Paris © Hervé Abbadie



Solo show, Rui Moreira, *La Nuit* 2014, Jeanne Bucher Jaeger - Marais space, Paris © Hervé Abbadie



Solo show, Rui Moreira, *I'm a Lost Giant in a Burnt Forest*, 2014, MUDAM, Luxembourg © Remi Villaggi



Solo show, Rui Moreira, *I'm a Lost Giant in a Burnt Forest*, 2014, MUDAM, Luxembourg © Remi Villaggi



Solo show, Rui Moreira, *Os Pirómanos*, 2016, Lisbonne, Portugal © Droits réservés



Rui Moreira, *To Conquer the concave*, 2010, Loulé, Algrave, Portugal © Droits réservés



Group show, *Para Além da Historia (Au-delà de l'Histoire)*, Plataforma das artes – Centro Internacionaldas artes José de Guimarães, Guimarães, Portugal © Droits réservés



Group show, *Arborescences*, 2013, Jeanne Bucher Jaeger, Marais, Paris © Droits réservés



Group show, *Corps et Âmes – Un regard prospectif*, 2017, Galerie Jeanne Bucher Jaeger, Espace Marais, Paris, France © Hervé Abbadie



Group show, *ATMO(SPHÈRES) – Œuvres sur papier*, 2019, Galerie Jeanne Bucher Jaeger, Espace St Germain, Paris, France © Grégory Copitet